

# The cost of surgery is increasing partly due to huge advancements in medical technology.

Below are indicative 2006 costs of some common procedures\*

**Mastectomy simple** – surgical removal of the breast(s)  
**Radical** – includes removal of the breast with the underlying muscle tissue and some axillary nodes from under the arm  
 \$3,500 - \$8,000

**Laparoscopic cholecystectomy** removal of the gall bladder by keyhole surgery  
 \$4,500 - \$7,500

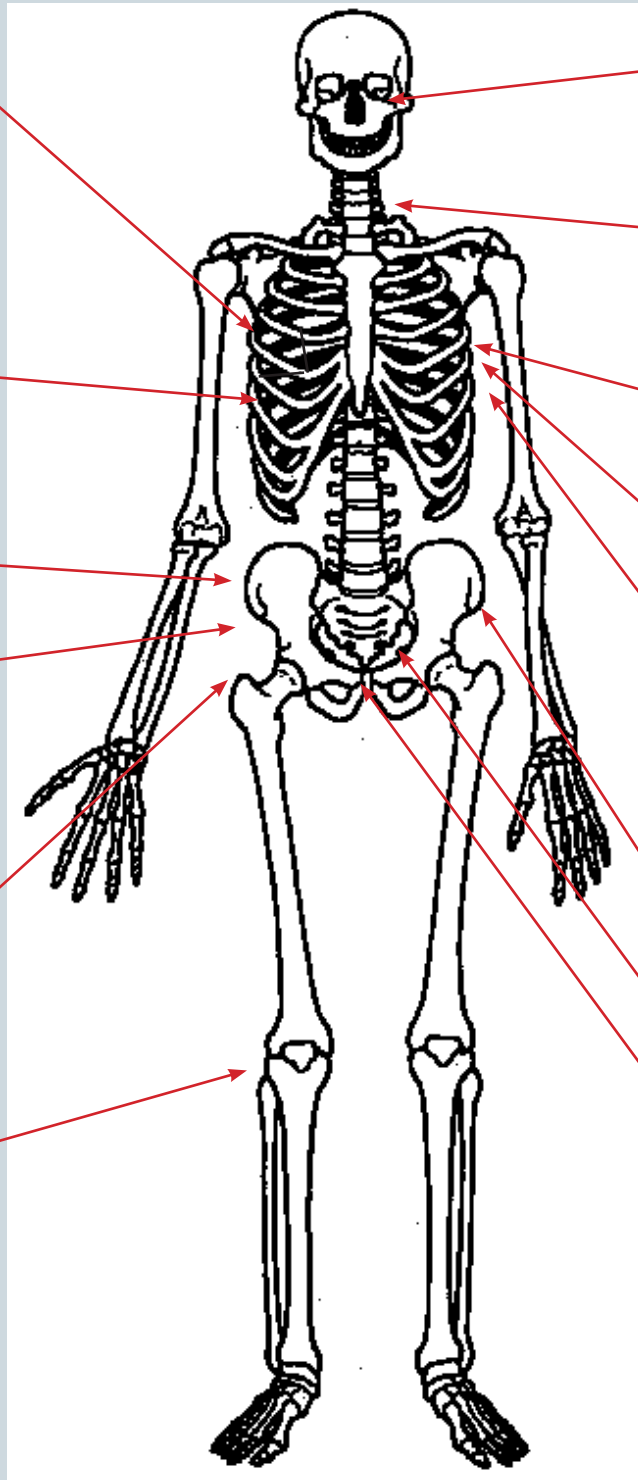
**Hysterectomy**  
 removal of uterus  
 \$4,800 - \$8,000

**Colonoscopy**  
 the use of a telescopic instrument with a camera attached to view the inner membrane of the colon  
 \$950 - \$1,500

**Laparoscopic excision of endometriosis**  
 surgical removal of the inflamed part of the lining of the uterus by keyhole surgery  
 \$4,500 - \$12,000

**Total knee replacement**  
 replacement of the knee joint  
 \$13,000 - \$20,000

**Excision of cancerous skin lesion**  
 surgical removal of a malignant growth on the skin  
 \$350 - \$3,000



**Cataract removal**  
 removal of an opacity (cloudiness) on the lens of the eye affecting vision  
 \$2,600 - \$3,500

**Thyroidectomy**  
 surgical removal of the thyroid gland  
 \$5,000 - \$8,000

**Cardiac bypass**  
 an operation to rechannel blood flow through the heart  
 \$25,000 - \$35,000

**Valve replacement**  
 replacement of a heart valve  
 \$32,000 - \$42,000

**Angiogram**  
 an imaging technique which produces clear views of flowing blood, or its blockage by narrowed vessels  
 \$3,400 - \$4,000

**Angioplasty**  
 insertion of a catheter to unblock an artery with a stent or balloon  
 \$17,000 - \$20,000

**Total hip replacement**  
 replacement of the hip joint  
 \$13,000 - \$20,000

**Prostate Removal**  
 Surgical removal of the prostate gland  
 \$7,000 - \$12,000  
**Prostate brachytherapy**  
 treatment of a prostate tumour where radioactive seeds are implanted in or around the prostate  
 \$20,000 - \$30,000

\*All costs indicative and sourced from Health Funds Association of New Zealand 2006 (incl GST)